

FIRE TEST CERTIFICATE

The element of construction described below was tested by EXOVA Warrington Fire on behalf of EzyStrut Cable & Pipe Supports, in accordance with the stated standard and achieved the test result stated below. Refer to the reference test for more information.

Referenced report(s)
38701200.1 and FRT180421.1

Test Standard
AS/NZS3013:2005

Description of Tested Product
EzyStrut ET3 Cable Tray

Support Type
Trapeze

Results Table

For full description of test specimens refer referenced test report.

Product	Load (kg/m)	Support Span (m)	Width	Included Options	Classification
ET3	12.5	1.5	150mm	twin trays, total load 25kg/m install up to two tiers	WS5X
			300mm		
	20	1.0	150mm	install up to two tiers	
			300mm		
	50	0.5	150mm	install up to two tiers	
			300mm		
			450mm		
			600mm		

Testing Authority Exova Warringtonfire Aus Pty Ltd

Address Unit 2, 409-411 Hammond Road, Dandenong VIC 3175

ABN 81 050 24 524

Supplier EzyStrut Cable & Pipe Supports (A Division of Korvest Ltd)

ABN 20 007 698 106

Head Office 580 Prospect Road, Kilburn SA 5084

Phone +61 8 8360 4550

Website www.ezystrut.com.au

Authorisation



Stephen Taubitz
General Manager
EzyStrut Cable & Pipe Supports



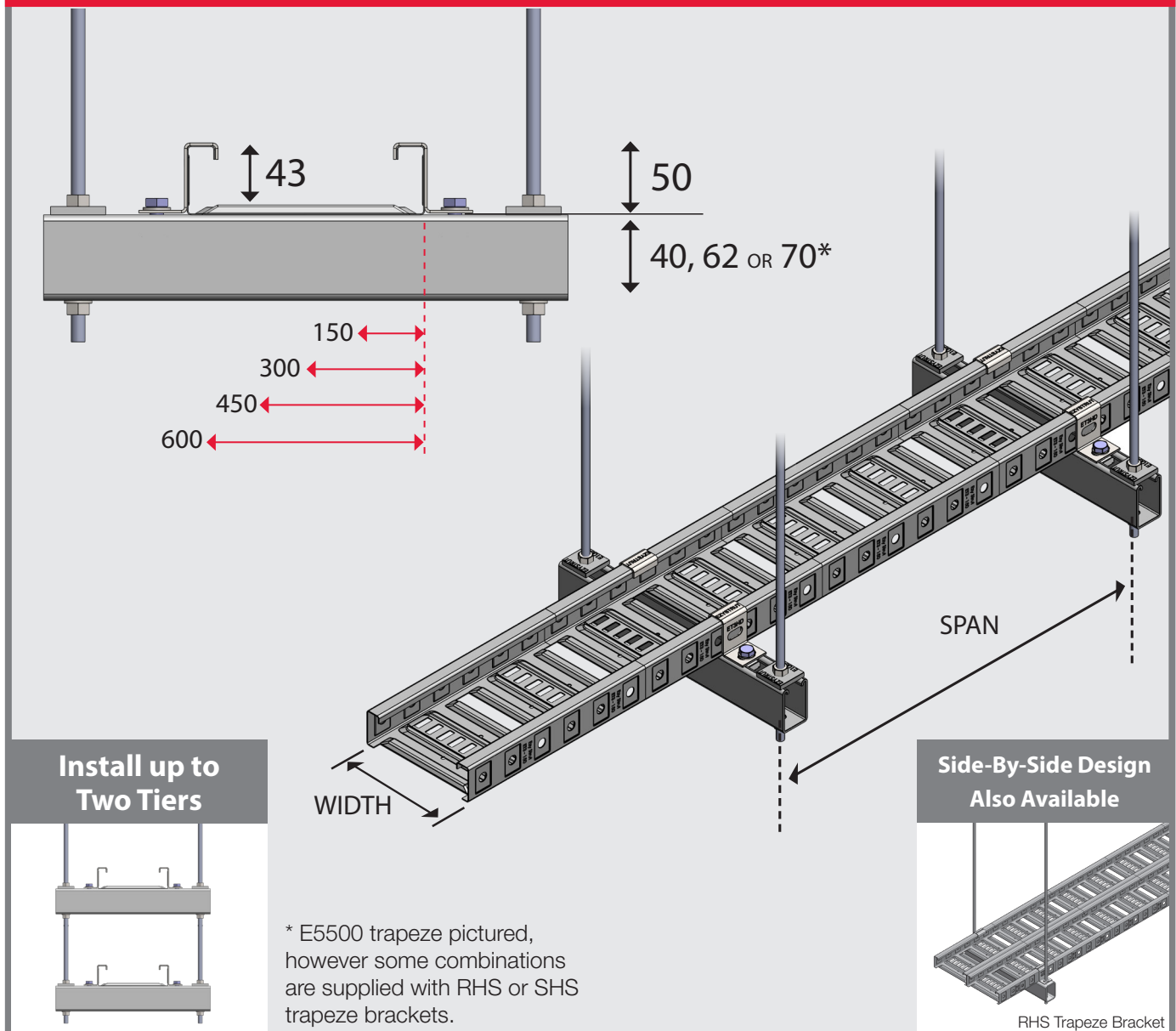
Brenton Davey
Engineering Manager
Korvest Ltd

LOOK FOR THE EZYSTRUT FIRE RATED TO AS/NZS3013:2005 LOGO.

It's a sure sign your cable management solution is designed in Australia, independently tested to meet Australian and New Zealand fire safety standards, and has been selected from Australia's widest range of fire rated products.

AS/NZS3013:2005
FIRE RATED
CABLE SUPPORT SYSTEMS

FRET3T FIRE RATED ET3 CABLE TRAY ON TRAPEZE

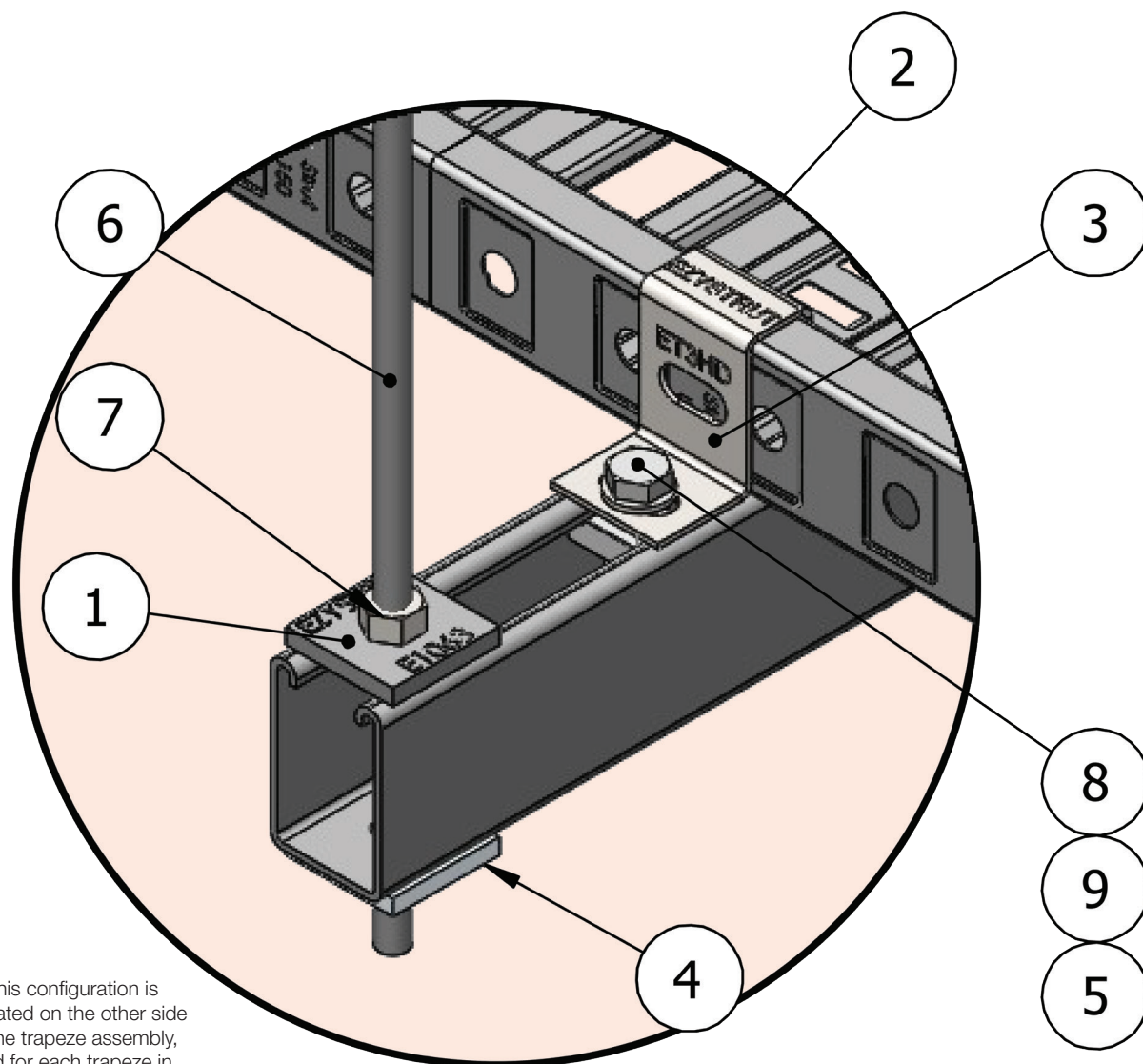


Load (kg/m)	Support Span (m)	Width Options	Length Options	Multi-Tier Options	Side-By-Side Options
12.5	1.5 E5500 Trapeze	150mm 300mm	3m	One tier only use M10 rod	Available in side-by-side (total 25kg/m) RHS Trapeze
20	1 SHS Trapeze	150mm 300mm	3m	One tier only use M10 rod	not available
50	0.5 E5500 Trapeze	150mm 300mm 450mm 600mm	3m	Up to two tiers, use M12 GR8.8 rod Up to one tier, use M10 GR8.8 rod	not available

EzyStrut will supply a tailored kit solution based on your selection from the load, width, length and tier options listed in the table above, as well as the overall length required.

To ensure AS/NZS3013:2005 compliance, all tray must be installed with the included splice plates, hold downs, trapeze brackets and fasteners, according to the recommended support span.

INSTALL GUIDE: SINGLE FRET3 TRAY ON E5500 TRAPEZE



(this configuration is repeated on the other side of the trapeze assembly, and for each trapeze in multi-tiered systems)

KEY:

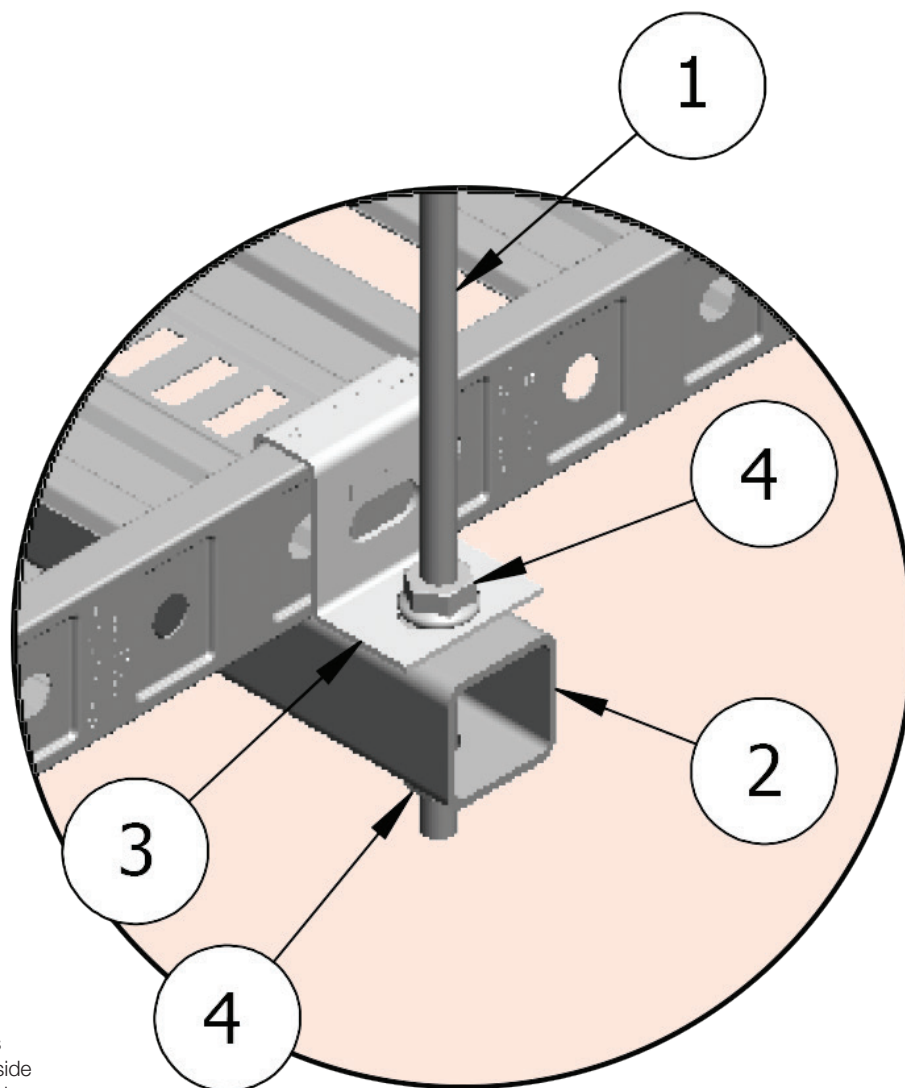
EzyStrut
Cable & Pipe Supports

AS/NZS3013:2005
FIRE RATED
CABLE SUPPORT SYSTEMS

1	FRTBE5500 Trapeze Bracket	6	TR10 / TR12 Threaded Rod
2	FRET3 Tray	7	CNH Nut (install on top and bottom)
3	ET3HD Hold Down Bracket	8	FW10 Flat Washer
4	E1063 / E1064 Flat Fitting	9	E1008 Channel Nut
5	HS1030 Hex Screw		

This document is for installation guidance only, it should not be used as proof of conformance. All fire rated systems should be installed according to the originally quoted load ratings and support spans. Please contact EzyStrut for further information regarding compliance to the AS/NZS3013:2005 standards.

INSTALL GUIDE: SINGLE FRET3 TRAY ON SHS TRAPEZE



(this configuration is repeated on the other side of the trapeze assembly, and for each trapeze in multi-tiered systems)

KEY:

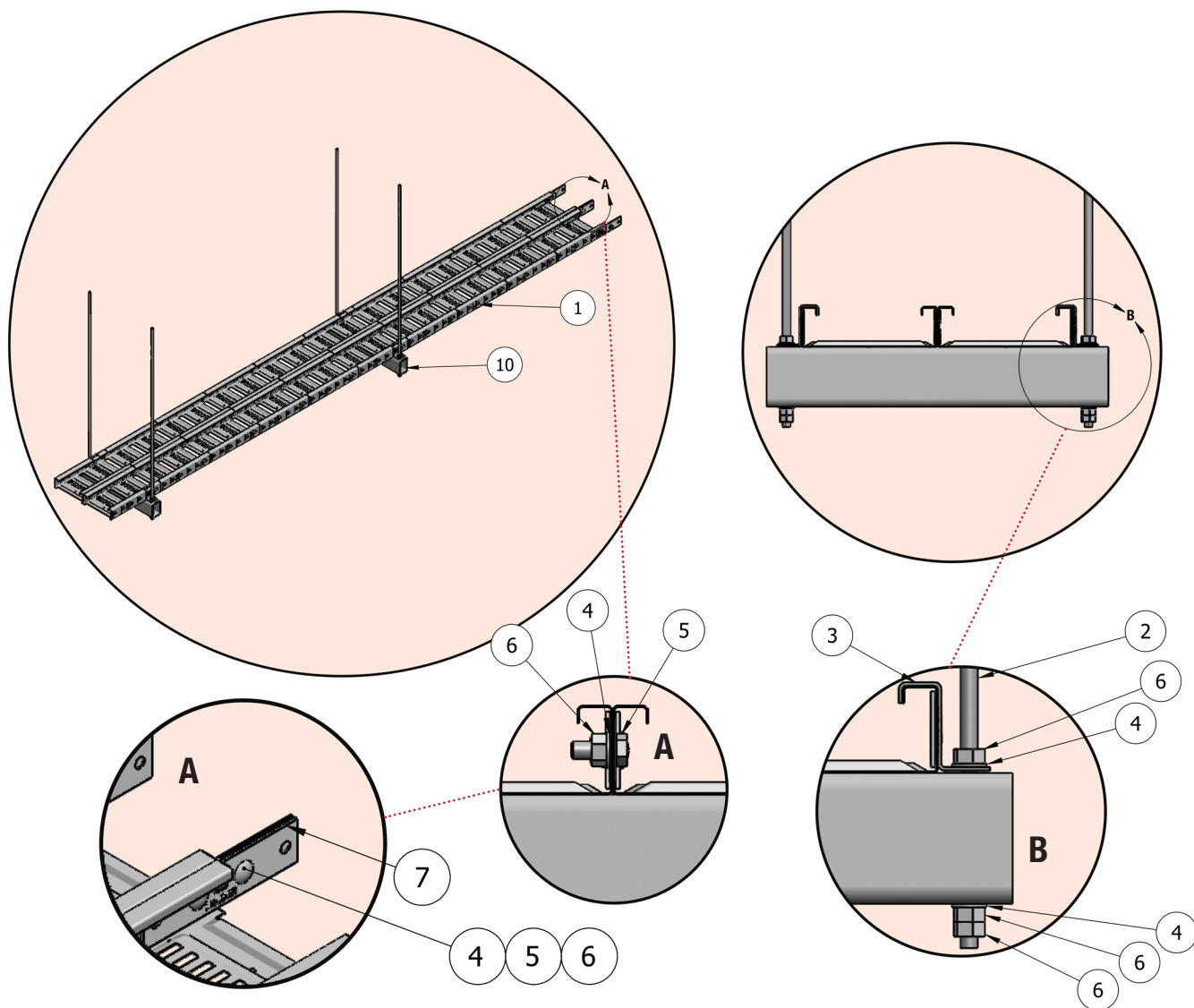
EzyStrut
Cable & Pipe Supports

AS/NZS3013:2005
FIRE RATED
CABLE SUPPORT SYSTEMS

1	TR10 Threaded Rod
2	FRTB-SHS Trapeze Bracket
3	ET3HD Hold Down Bracket
4	CNH Splice Nut (install on top and bottom)

This document is for installation guidance only, it should not be used as proof of conformance. All fire rated systems should be installed according to the originally quoted load ratings and support spans. Please contact EzyStrut for further information regarding compliance to the AS/NZS3013:2005 standards.

INSTALL GUIDE: TWIN FRET3 TRAY ON RHS TRAPEZE



KEY:

EzyStrut
Cable & Pipe Supports

AS/NZS3013:2005
FIRE RATED
CABLE SUPPORT SYSTEMS

1	FRET3 Tray	6	HN10 Hex Nut
2	TR10 Threaded Rod	7	ET3S Splice Plate
3	ET3HD Hold Down Bracket	8	SBH Splice Bolt
4	FW10 Flat Washer	9	CNH Splice Nut
5	HS1025 Hex Screw	10	FRTB-RHS Trapeze Bracket

*Items 7, 8 and 9 to be used where required for splicing on outer sides of tray.

This document is for installation guidance only, it should not be used as proof of conformance. All fire rated systems should be installed according to the originally quoted load ratings and support spans. Please contact EzyStrut for further information regarding compliance to the AS/NZS3013:2005 standards.