

## HOW TO ORDER CABLE DUCT

Example

# DCO 100 100 G



Select Duct	Select Width (mm)	Select Height (mm)	Select Finish
<b>DCO</b> Clip on Lid Duct	<b>50</b>	<b>50</b>	<b>G</b> Pre-Galvanised
<b>DSL</b> Screw on Lid Duct	<b>75</b>	<b>75</b>	<b>S</b> Stainless Steel (MTO)
<b>DCB</b> Duct 90° Bend/Riser	<b>100</b>	<b>100</b>	<b>H</b> Hot Dip Galvanised (MTO)*
<b>DCT</b> Duct Tee	<b>150</b>	<b>150</b>	
<b>DCC</b> Duct Cross			
<b>DEC</b> Duct End Cap (made to order)			

\*Please note that the process of Hot Dip Galvanising sheet metal products is not recommended and product distortion is likely to occur as a result.

**D AVAILABLE AS MADE TO ORDER (MTO) FOR ANY HEIGHT TO WIDTH COMBINATION FOR CABLE DUCT. MINIMUM QUANTITIES APPLY.**

### DCO CLIP ON LID CABLE DUCT

Supplied in 2.4m lengths.

Joining screws and nuts sold separately, two (2) required per length. Product code WIZZ.



Width (mm)	Height (mm)	Weight (kg)	Pre-Galvanised
50	50	2.7	<b>DCO5050G</b> <b>A</b>
75	75	4.0	<b>DCO7575G</b> <b>A</b>
100	100	5.0	<b>DCO100100G</b> <b>A</b>
150	100	7.9	<b>DCO150100G</b> <b>B</b>

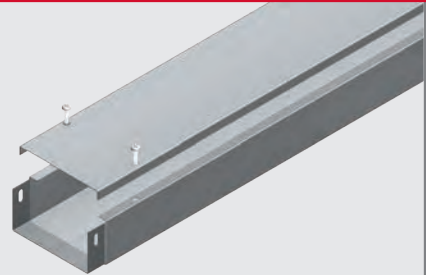
**D ALSO AVAILABLE IN STAINLESS STEEL, HOT DIP GALVANISED AS MTO.**

### DSL SCREW ON LID CABLE DUCT

Supplied in 2.4m lengths.

Each lid has 6 screw fixing points and is supplied with M6 fasteners to suit.

Joining screws and nuts sold separately, two (2) required per length. Product code WIZZ.



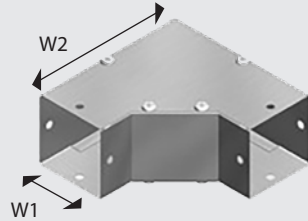
Width (mm)	Height (mm)	Weight (kg)	Pre-Galvanised
50	50	3.0	<b>DSL5050G</b> <b>A</b>
75	75	4.1	<b>DSL7575G</b> <b>A</b>
100	100	5.3	<b>DSL100100G</b> <b>A</b>
150	100	8.6	<b>DSL150100G</b> <b>B</b>

**D ALSO AVAILABLE IN STAINLESS STEEL, HOT DIP GALVANISED AS MTO.**

**Service Guide Key:** **A** Usually in stock at all branches **B** Usually in stock at head office **C** Normal lead time **D** Made to Order (lead time on enquiry)

**DCB CABLE DUCT COMBINATION BEND/RISER**

45° or 90° bends available for use in horizontal or vertical applications when using equal size fittings. For unequal sizes, either a combination bend or combination riser must be specified. Joining screws and nuts sold separately. Product code WIZZ.

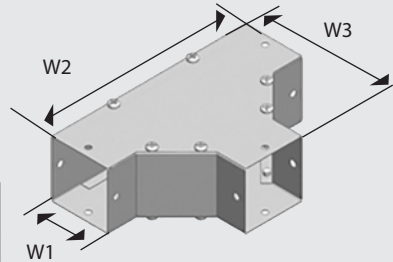


Width 1 (mm)	Height (mm)	Width 2 (mm)	Pre-Galvanised
50	50	167	DCB5050G <span style="color: green;">A</span>
75	75	197	DCB7575G <span style="color: green;">A</span>
100	100	217	DCB100100G <span style="color: green;">A</span>
150	100	267	DCB150100G <span style="color: yellow;">B</span>

**D** ALSO AVAILABLE IN STAINLESS STEEL, HOT DIP GALVANISED AS MTO.

**DST CABLE DUCT COMBINATION TEE**

Combination Tees can be used in horizontal or vertical applications when using equal size fittings to make a tee-shaped joint between 3 lengths. Unequal sizes can only be used in horizontal applications. Joining screws and nuts sold separately. Product code WIZZ.

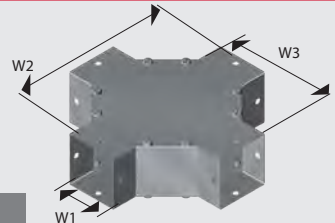


Width 1 (mm)	Height (mm)	Width 2 (mm)	Width 3 (mm)	Pre-Galvanised
50	50	287	167	DCT5050G <span style="color: green;">A</span>
75	75	312	197	DCT7575G <span style="color: green;">A</span>
100	100	337	217	DCT100100G <span style="color: green;">A</span>
150	100	387	267	DCT150100G <span style="color: yellow;">B</span>

**D** ALSO AVAILABLE IN STAINLESS STEEL, HOT DIP GALVANISED AS MTO.

**DCC CABLE DUCT COMBINATION CROSS**

For horizontal or vertical applications when using equal size fittings to make a cross-shaped joint between 4 lengths. For unequal sizes, either a combination bend or combination riser must be specified. Joining screws and nuts sold separately. Product code WIZZ.



**D** AVAILABLE AS MADE TO ORDER

**DEC CABLE DUCT END CAP**

Available for any height to width combination/size of steel duct. Joining screws and nuts sold separately. Product code WIZZ.



**D** AVAILABLE AS MADE TO ORDER

FASTENERS

STRUT SYSTEMS

CABLE SUPPORTS

FIRERATED

PIPE SUPPORTS